



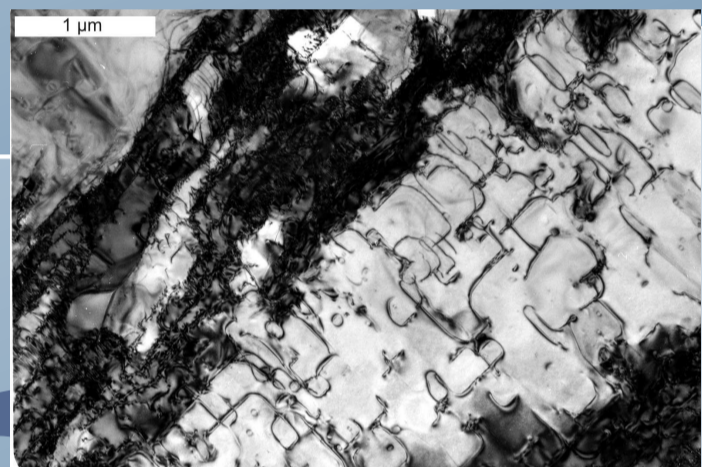
Mentoring Lecture Series

Empowering Women to Develop Academic Careers

November 15, 2011, 16:00, UZAI 2B201

Univ.-Prof. Dr. Claudia Trepmann

Department für Geo- und Umweltwissenschaften
Universität München, DE



The rock record of coseismic deformation and postseismic creep

Following large earthquakes, decelerating surface deformation is observed by geodetic measurements. Creep during stress relaxation after quasi-instantaneous coseismic loading at hypocentral depth and below is suggested to be one of the causes for this postseismic surface motion.

To date, these depths are not directly accessible by any geophysical method. But microstructures of naturally deformed and exhumed metamorphic rocks provide the record of grain scale processes at depths that took place millions of years ago. While this is an integral record of many superimposed episodes of the geologic history, laboratory experiments allow specific stages to be isolated and studied separately.

The science lecture (ca. 1 hour) is followed by a Question & Answer period on issues specific to career development of women in academia (e.g., options, barriers, how to overcome them, good practices and strategies).

contact: nowagea.univie.ac.at